

Map Information

Map Reference: SOM_WATER_BREAKAGES_SHABELLE_MARCH_03032024_A3

Produced by: The Somalia Water and Land Information Management Project (SWALIM) by means of visual image interpretation

SWALIM is a multi-donor project implemented by the United Nations Food and Agriculture Organization (FAO)

For copies of digital data please contact: swalim@fao.org

VHR Verified: The Breakage Status has been Verified Using a Current Very High Resolution (VHR) Satellite Imagery

Not Verified: There is no current VHR Imagery over this site/ The available image is cloudy hindering current assessment. Site Assumed Previous Verified Status

Satellite data: WV2/WV3/PLEIADES Imagery dates: Sept 2023 - Jan 2024 Imagery resolution: 0.3 - 0.5 Meter Other dataset: FAO-SWALIM, UNDP Analysis: FAO-SWALIM Map projection: Geographic Datum: WGS 84

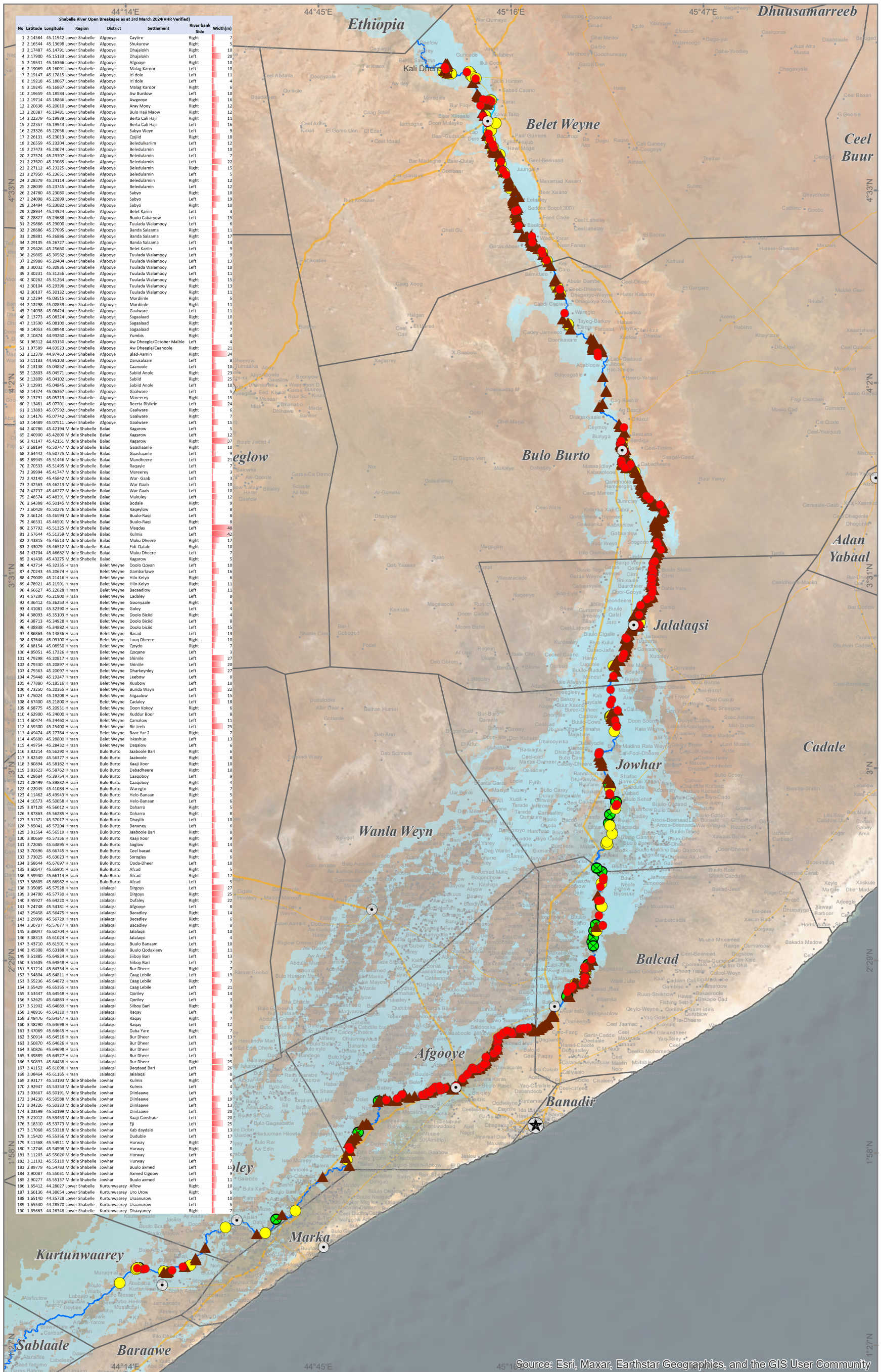


Table with columns: No, Latitude, Longitude, Region, District, Settlement, River bank, Side, Width(m). It lists 190 breakage points along the Shabelle River.



The boundaries and names on this map do not imply official endorsement or acceptance by the United Nations.

