

Shabelle River Area (ha) Flooded Oct 28th to 3rd Nov 2019

District	Agriculture	Non-Agriculture	Total (ha)
Afgooye	1,011	721	1,731
Balcad	18,328	9,374	27,702
Belet Weyne	23,286	17,246	40,532
Bulo Burto	2,038	385	2,423
Jalalaqsi	2,870	1,017	3,887
Jowhar	32,292	19,282	51,574
Wanla Weyn	216	0	216
Total (ha)	80,041	48,025	128,066

Potentially Affected Villages
by flooding per district

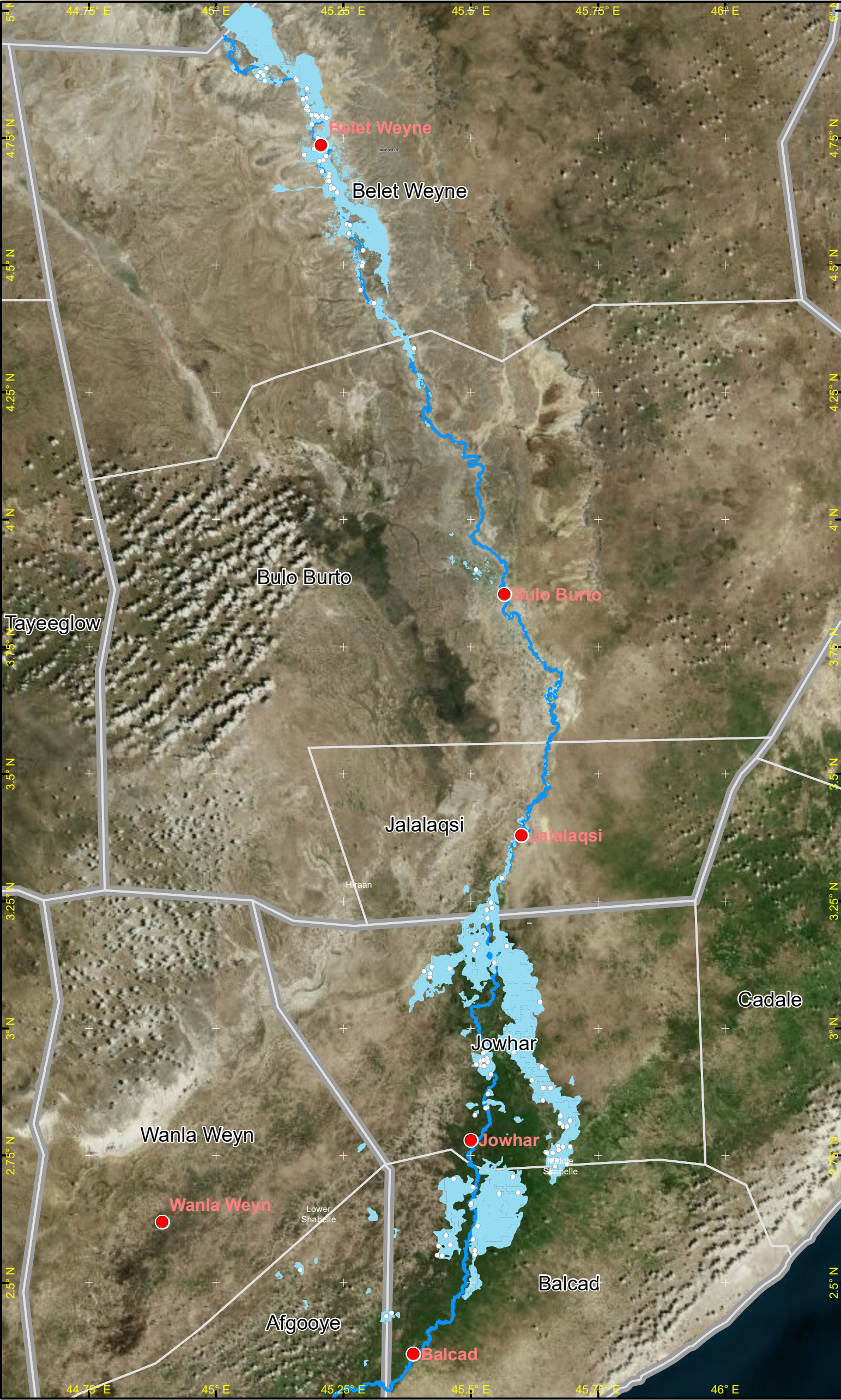
District	No. of villages
Afgooye	2
Balcad	18
Belet Weyne	46
Bulo Burto	2
Jalalaqsi	5
Jowhar	51
Total	124

Disclaimer:

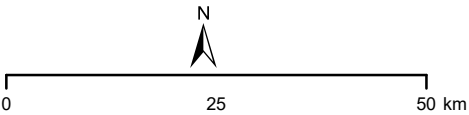
The flood extent was extracted from a combination of sources. Landsat-8 images were analysed by SWALIM and the results were integrated with the data kindly provided by UNOSAT based on VIIRS-NOAA images

Legend

- Potentially affected villages
- Major Town
- Shabelle River
- Flood Extent
- District Boundary
- Region Boundary



Map Ref: SOM_Shabelle_River_Flooding_08112019A3_
Map Produced by: The Somalia Water and Land Information Management Project (SWALIM).
SWALIM is a Multi-donor Project Implemented by the United Nations' Food & Agriculture Organization.
For copies of digital data please contact: swalim@fao.org
Map projection: Geographic Coordinates, WGS 84 datum.



Data Source: FAO,NOAA,OCHA
Date Created: 11/11/2019
Contact: swalim@fao.org
Website: www.faoswalim.org

The boundaries and names and the designations used on this map do not imply official endorsement or acceptance by the United Nations.